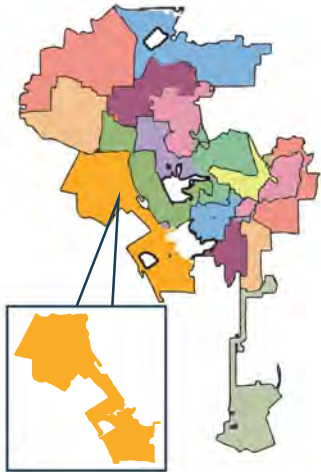


SMOKEFREE MULTI-UNIT HOUSING PROFILE

COUNCIL DISTRICT 11

BASED ON SURVEY RESPONSES FROM TENANTS & OWNERS

MULTI-UNIT HOUSING INCLUDES APARTMENTS, DUPLEX, TRIPLEXES WHERE UNITS ARE NEXT TO EACH OTHER SHARING A COMMON WALL



TOTAL HOUSING UNITS¹
124,740



MULTI-UNIT HOUSING
63%



7 in 10

DISTRICT TENANTS SUPPORT SMOKEFREE LAWS IN ALL PROPERTIES²



DISTRICT TENANTS

SUPPORT SMOKEFREE HOUSING POLICIES²



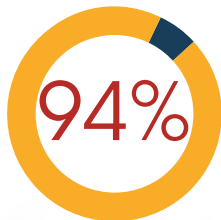
Of **tenants** surveyed supported smokefree policies in new buildings.



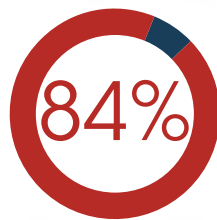
Of **tenants** surveyed supported smokefree policies in old buildings.

OWNERS IN THE CITY OF LA

SUPPORT SMOKEFREE HOUSING POLICIES³



Of **owners** with self-imposed smokefree policies support policies.



Of **owners** without self-imposed smokefree policies support policies.

DISTRICT TENANTS

REPORTED EXPOSURE TO SECONDHAND SMOKE²

WITHIN MULTI-UNIT HOUSING:



2 in 5

Tenants reported exposure to secondhand smoke.



1 in 3

Tenants living with children reported exposure to secondhand smoke in their home.



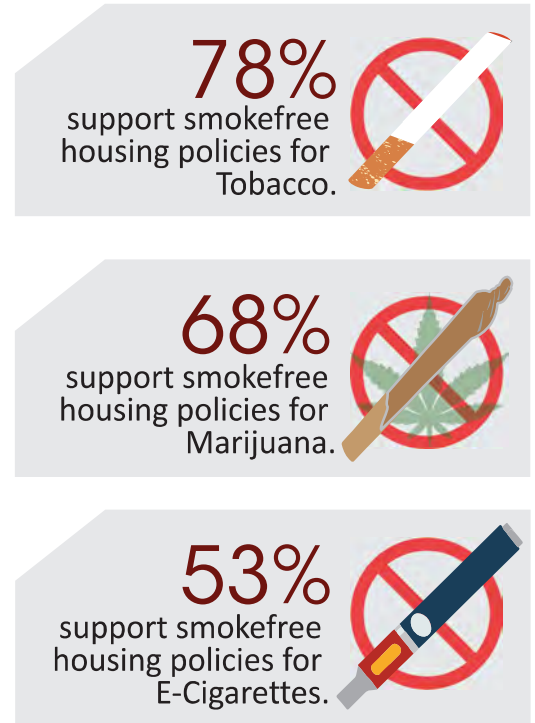
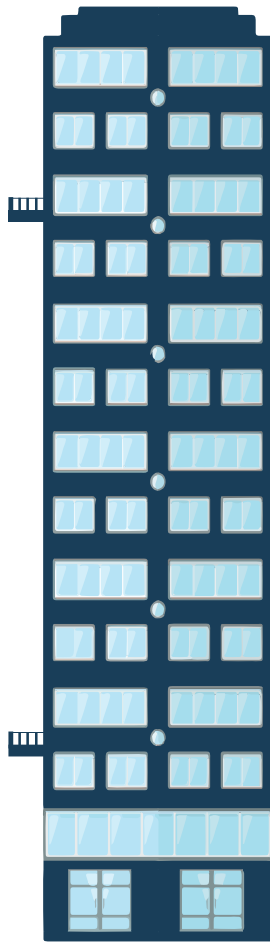
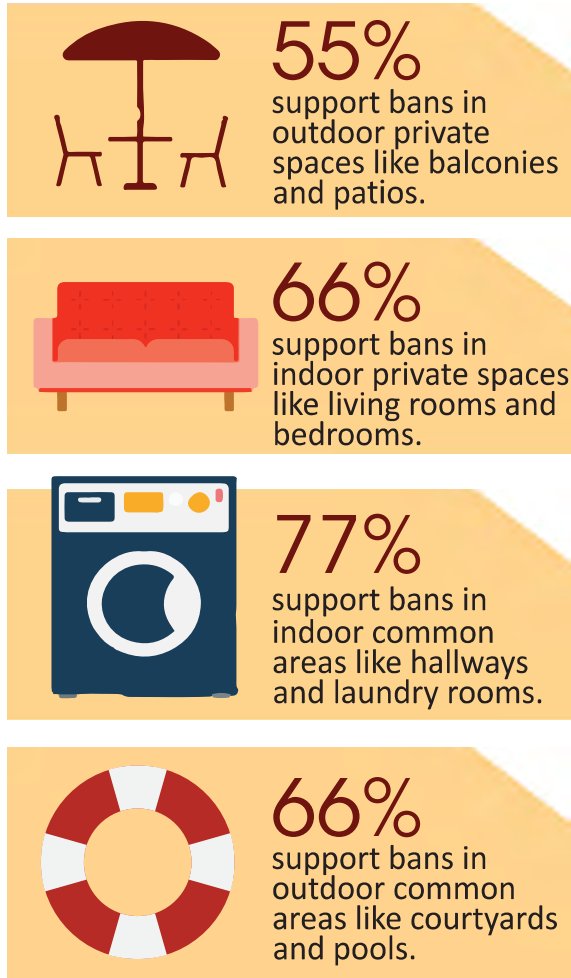
2 in 5

Tenants who have or live with someone who has a chronic condition reported exposure to secondhand smoke in their home.

7 in 10

Of these respondents reported that secondhand smoke worsened the chronic health condition.

BREAKDOWN OF TENANT SUPPORT FOR SMOKEFREE HOUSING POLICIES³



AMONG THE TENANTS EXPOSED TO SECONDHAND SMOKE²

69% were exposed to Tobacco smoke.

57% were exposed to Marijuana smoke.

41% were exposed to E-Cigarette vapor.

ABOUT THE SMOKEFREE MULTI-UNIT HOUSING PROJECT

The UCLA Center for Health Policy Research in partnership with the Los Angeles County Department of Public Health evaluates smokefree multi-unit housing throughout the City of Los Angeles. The evaluation assesses exposure to secondhand smoke in multi-unit housing, knowledge of the harms of secondhand smoke, and the level of support for protections against secondhand smoke exposure in multi-unit housing. Project Partners: Apartment Association of Greater Los Angeles, Fame Corporations, Day One, and Koreatown Youth Community Center.

© 2019. California Department of Public Health. Funded under contract #CTCP-17-19.

REFERENCES

1. 2010 U.S. Census Data and 2016 American Community Survey
2. 2019 UCLA Center for Health Policy Research and LADPH SFMUH Project Tenant Survey Data from 409 Respondents
3. 2019 UCLA Center for Health Policy Research and LADPH SFMUH Project Owner Survey Data from 145 Respondents