



Community Health Alliance

NEIGHBORS FOR SMOKE-FREE LUNGS



Objectives

- Learn about secondhand smoke (SHS), thirdhand smoke (THS), its health effects
- Types of smoke that can be included in smoke-free multi-unit housing (SF MUH)
- Populations at risk to SHS exposure
- Los Angeles district profiles/ data
- SF MUH benefits
- Next steps you can take



TOPICS FOR
DISCUSSION



SECONDHAND SMOKE

Secondhand smoke (SHS) consists of smoke from a burning tobacco product and the smoke exhaled by a smoker. It is a toxic substance that causes serious health problems for non-smokers!



Reference:

1. U.S. Department of Health and Human Services. The Health Consequences of Involuntary Exposure to Tobacco Smoke: A Report of the Surgeon General. U.S. Department of Health and Human Services, Centers for Disease Control and Prevention, National Center for Chronic Disease Prevention and Health Promotion, Office on Smoking and Health, 2006. Available from: <https://www.ncbi.nlm.nih.gov/books/NBK44324/>



Secondhand smoke kills over 41,000 non-smoking adults in the U.S. every year.²



Reference:

2. Centers for Disease Control and Prevention. Tobacco Related Mortality, Updated August 2015.

Available from:

https://www.cdc.gov/tobacco/data_statistics/fact_sheets/health_effects/tobacco_related_mortality.

THIRD HAND SMOKE

Third-hand smoke (THS) is tobacco smoke residue that is left behind when someone smokes indoors.³

Reference:

3. Jacob, P., et al., Thirdhand Smoke: New Evidence, Challenges, and Future Directions. *Chemical Research in Toxicology*, 2016.





Thirdhand smoke is associated with short and long term health problems which include coughing, asthma, and respiratory tract infection.³

Reference:

3. Jacob, P., et al., Thirdhand Smoke: New Evidence, Challenges, and Future Directions. *Chemical Research in Toxicology*, 2016.



NO SMOKING

**What would
smoke-free
multi-unit
housing
include?**



Cigarettes

SECONDHAND TOBACCO SMOKE IS A COMBINATION OF THE SMOKE FROM THE BURNING TIP OF A CIGARETTE OR OTHER SMOKED TOBACCO PRODUCT AND SMOKE EXHALED BY A SMOKER THAT IS DILUTED BY THE SURROUNDING AIR.⁴

- Contains more than 7,000 chemicals⁴
- Hundreds of the chemicals are toxic⁴
- Over 70 of the chemicals can cause cancer⁴

Reference:

4. National Cancer Institute. Secondhand Smoke and Cancer, 2018. Available at www.cancer.gov/about-cancer/causes-prevention/risk/tobacco/second-hand-smoke-fact-sheet



E-cigarettes

E-CIGARETTES ARE ELECTRONIC SMOKING DEVICES THAT USE A BATTERY TO HEAT A LIQUID NICOTINE SOLUTION CALLED “E-LIQUID.” THE HEATED LIQUID CREATES AN AEROSOL THAT IS INHALED INTO THE LUNGS.⁵

- Danger of explosions⁶
- Causes fires⁶

References:

5. California Department of Public Health, California Tobacco Control Program. State Health Officer's Report on E-Cigarettes: A Community Health Threat, 2015. Available from:

<https://www.cdph.ca.gov/programs/tobacco/Documents/CDPH%20CTCP%20Refresh/Policy/ESDs/State%20Health-e-cig%20report.pdf>.

6. Campbell, R. Electronic Cigarette Explosions and Fires: The 2015 Experience. National Fire Protection Association. 2016. Available from:

<https://www.nfpa.org/News-and-Research/Data-research-and-tools/Electrical/Electronic-Cigarette-Explosions-and-Fires-The-2015-Experience>



Cannabis

EXPOSURE TO SECONDHAND CANNABIS SMOKE CREATES A SECONDHAND HIGH. NONSMOKERS EXPOSED TO SECONDHAND CANNABIS SMOKE REPORTED FEELING THE EFFECTS OF A SECONDHAND HIGH. THE NONSMOKERS HAD DETECTABLE LEVELS OF TETRAHYDROCANNABINOL (THC) FOUND IN THEIR BLOOD AND URINE.⁷

Reference:

7. Tobacco-Free CA. Exposure to Secondhand Smoke from Marijuana is Dangerous, 2021. Available at <https://tobaccofreeca.com/secondhand-smoke/marijuana-secondhand-smoke-dangers/>



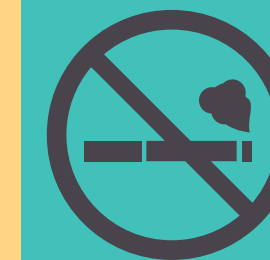
Hookah

HOOCAH IS AS DANGEROUS AS CIGARETTES. A TYPICAL HOOCAH SESSION LASTS 45–60 MINUTES AND CAN HAVE THE SAME HEALTH IMPACT AS SMOKING 100 OR MORE CIGARETTES.⁸

Reference:

8. U.S. Department of Health and Human Services. Centers for Disease Control and Prevention. Hookahs Fact Sheet. 2016. Available from: http://www.cdc.gov/tobacco/data_statistics/fact_sheets/tobacco_industry/hookahs/.

Everyone exposed to SHS is at risk for developing health problems however, these are the most vulnerable populations:



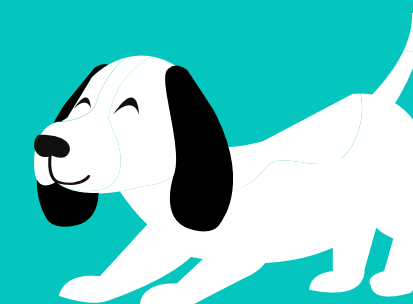
Children and elders⁹



Pregnant Women⁹



People with diseases⁹



Pets¹⁰

Reference:

9. U.S. Department of Health and Human Services. Centers for Disease Control and Prevention. Secondhand Smoke: An Unequal Danger, 2015. Available from: <https://www.cdc.gov/vitalsigns/pdf/2015-02-vitalsigns.pdf>.

10. U.S Food and Drug Administration. Secondhand (and Third-Hand) Smoke May Be Making Your Pet Sick, 2021. Available from: <https://www.fda.gov/consumers/consumer-updates/secondhand-and-third-hand-smoke-may>

**SMOKE IS SMOKE.
No level is safe.¹¹**

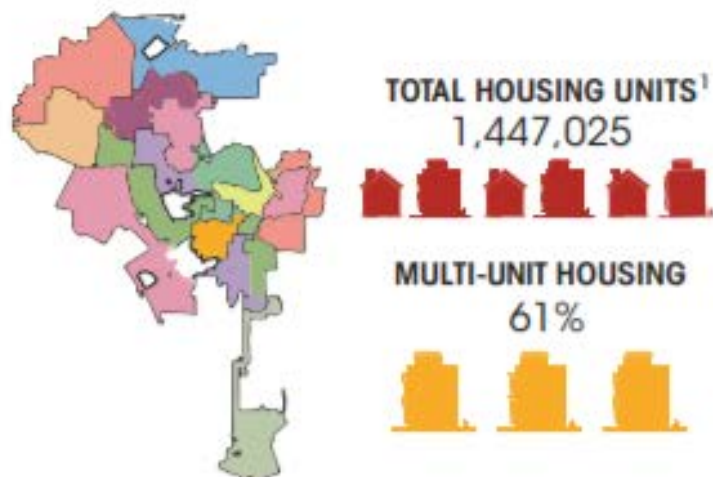
Reference:

11. Potera C. Smoking and secondhand smoke. Study finds no level of SHS exposure free of effects. Environ Health Perspect. 2010;118(11):A474.
doi:10.1289/ehp.118-a474a

SMOKEFREE MULTI-UNIT HOUSING PROFILE CITY OF LOS ANGELES*

BASED ON SURVEY RESPONSES FROM TENANTS & OWNERS

MULTI-UNIT HOUSING INCLUDES APARTMENTS, DUPLEX, TRIPLEXES WHERE UNITS ARE NEXT TO EACH OTHER SHARING A COMMON WALL



LOS ANGELES DISTRICT DATA

District 2
District 3
District 5
District 6
District 11

WHICH IS YOUR DISTRICT?

TENANTS SUPPORT SMOKEFREE HOUSING POLICIES²



Of tenants surveyed supported smokefree policies in new buildings.



Of tenants surveyed supported smokefree policies in old buildings.

TENANTS REPORTED EXPOSURE TO SECONDHAND SMOKE²

WITHIN MULTI-UNIT HOUSING:



1 in 2

Tenants reported exposure to secondhand smoke.



1 in 2

Tenants living with children reported exposure to secondhand smoke in their home.



3 in 5

Tenants who have or live with someone who has a chronic condition reported exposure to secondhand smoke in their home.

7 in 10

Of these respondents reported that secondhand smoke worsened the chronic health condition.

OWNERS SUPPORT SMOKEFREE HOUSING POLICIES³



Of owners with self-imposed smokefree policies support policies.



Of owners without self-imposed smokefree policies support policies.

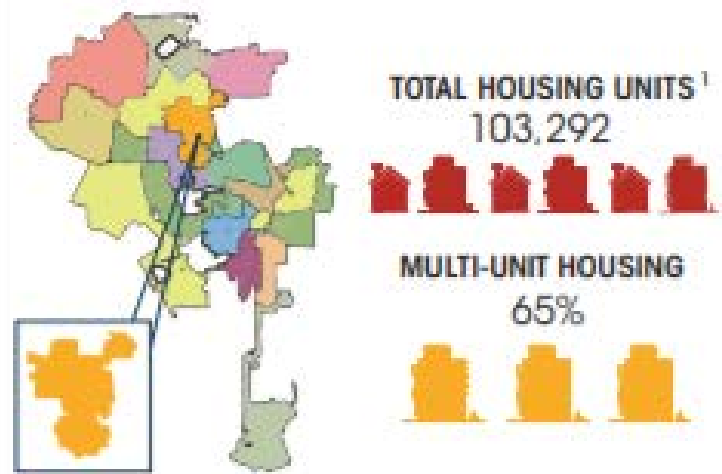
Reference:

12. UCLA Center for Health Policy Research. Health at Risk: Policies Are Needed to End Cigarette, Marijuana, and E-Cigarette Secondhand Smoke in Multi-Unit Housing in Los Angeles. 2019. <https://healthpolicy.ucla.edu/publications/Documents/PDF/2020/CityofLosAngeles.pdf>.

SMOKEFREE MULTI-UNIT HOUSING PROFILE COUNCIL DISTRICT 2

BASED ON SURVEY RESPONSES FROM TENANTS & OWNERS

MULTI-UNIT HOUSING INCLUDES APARTMENTS, DUPLEX, TRIPLEXES WHERE UNITS ARE NEXT TO EACH OTHER SHARING A COMMON WALL



DISTRICT TENANTS SUPPORT SMOKEFREE HOUSING POLICIES²



Of tenants surveyed supported smokefree policies in new buildings.



Of tenants surveyed supported smokefree policies in old buildings.

DISTRICT TENANTS REPORTED EXPOSURE TO SECONDHAND SMOKE²

WITHIN MULTI-UNIT HOUSING:



2 in 5

Tenants reported exposure to secondhand smoke.



1 in 2

Tenants living with children reported exposure to secondhand smoke in their home.



2 in 5

Tenants who have or live with someone who has a chronic condition reported exposure to secondhand smoke in their home.

2 in 5

Of these respondents reported that secondhand smoke worsened the chronic health condition.

OWNERS IN THE CITY OF LA SUPPORT SMOKEFREE HOUSING POLICIES³



Of owners with self-imposed smokefree policies support policies.



Of owners without self-imposed smokefree policies support policies.

DISTRICT 2 CITIES

North Hollywood

Studio City

Sun Valley

Valley Village

Van Nuys

Valley Glen

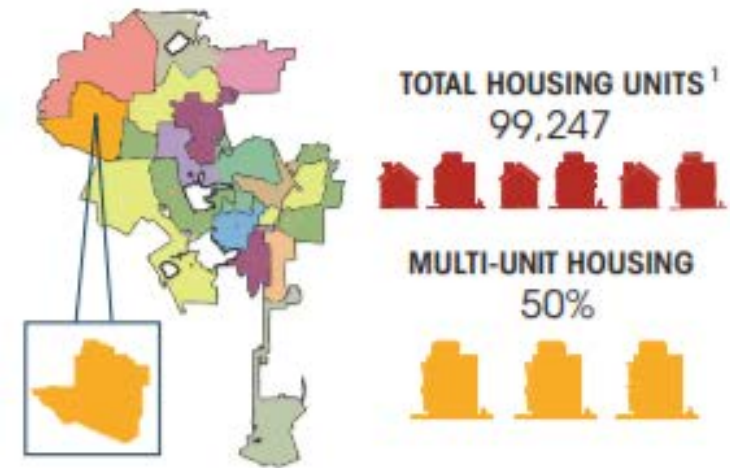
Reference:

12. UCLA Center for Health Policy Research. Health at Risk: Policies Are Needed to End Cigarette, Marijuana, and E-Cigarette Secondhand Smoke in Multi-Unit Housing in Los Angeles. 2019. <https://healthpolicy.ucla.edu/publications/Documents/PDF/2020/District2.pdf>.

SMOKEFREE MULTI-UNIT HOUSING PROFILE COUNCIL DISTRICT 3

BASED ON SURVEY RESPONSES FROM TENANTS & OWNERS

MULTI-UNIT HOUSING INCLUDES APARTMENTS, DUPLEX, TRIPLEXES WHERE UNITS ARE NEXT TO EACH OTHER SHARING A COMMON WALL



DISTRICT 3 CITIES

Woodland Hills

Tarzana

Reseda

Winnetka

Canoga Park

DISTRICT TENANTS SUPPORT SMOKEFREE HOUSING POLICIES²



Of tenants surveyed supported smokefree policies in new buildings.



Of tenants surveyed supported smokefree policies in old buildings.

DISTRICT TENANTS REPORTED EXPOSURE TO SECONDHAND SMOKE²

WITHIN MULTI-UNIT HOUSING:



1 in 2
Tenants reported exposure to secondhand smoke.



1 in 2
Tenants living with children reported exposure to secondhand smoke in their home.



3 in 5
Tenants who have or live with someone who has a chronic condition reported exposure to secondhand smoke in their home.

4 in 5
Of these respondents reported that secondhand smoke worsened the chronic health condition.

OWNERS IN THE CITY OF LA SUPPORT SMOKEFREE HOUSING POLICIES³



Of owners with self-imposed smokefree policies support policies.



Of owners without self-imposed smokefree policies support policies.

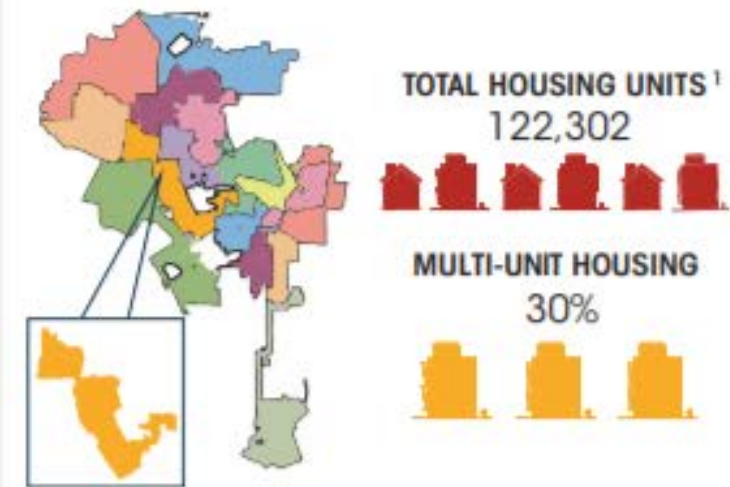
Reference:

12. UCLA Center for Health Policy Research. Health at Risk: Policies Are Needed to End Cigarette, Marijuana, and E-Cigarette Secondhand Smoke in Multi-Unit Housing in Los Angeles. 2019. <https://healthpolicy.ucla.edu/publications/Documents/PDF/2020/District3.pdf>.

SMOKEFREE MULTI-UNIT HOUSING PROFILE COUNCIL DISTRICT 5

BASED ON SURVEY RESPONSES FROM TENANTS & OWNERS

MULTI-UNIT HOUSING INCLUDES APARTMENTS, DUPLEX, TRIPLEXES WHERE UNITS ARE NEXT TO EACH OTHER SHARING A COMMON WALL



DISTRICT 5 CITIES

- Bel Air
- Beverly Crest
- Beverlywood
- Century City
- Cheviot Hills
- Comstock Hills
- Fairfax
- Hollywood
- Melrose
- Oak Forest Canyon
- Palms
- Pico-Robertson
- Roscomare
- Westside Village
- Westwood
- Westwood Gardens
- Westwood South of Santa Monica

DISTRICT TENANTS SUPPORT SMOKEFREE HOUSING POLICIES²



Of tenants surveyed supported smokefree policies in new buildings.



Of tenants surveyed supported smokefree policies in old buildings.

OWNERS IN THE CITY OF LA SUPPORT SMOKEFREE HOUSING POLICIES³



Of owners with self-imposed smokefree policies support policies.



Of owners without self-imposed smokefree policies support policies.

DISTRICT TENANTS REPORTED EXPOSURE TO SECONDHAND SMOKE²

WITHIN MULTI-UNIT HOUSING:



1 in 2
Tenants reported exposure to secondhand smoke.



1 in 2
Tenants living with children reported exposure to secondhand smoke in their home.



3 in 5
Tenants who have or live with someone who has a chronic condition reported exposure to secondhand smoke in their home.

3 in 5
Of these respondents reported that secondhand smoke worsened the chronic health condition.

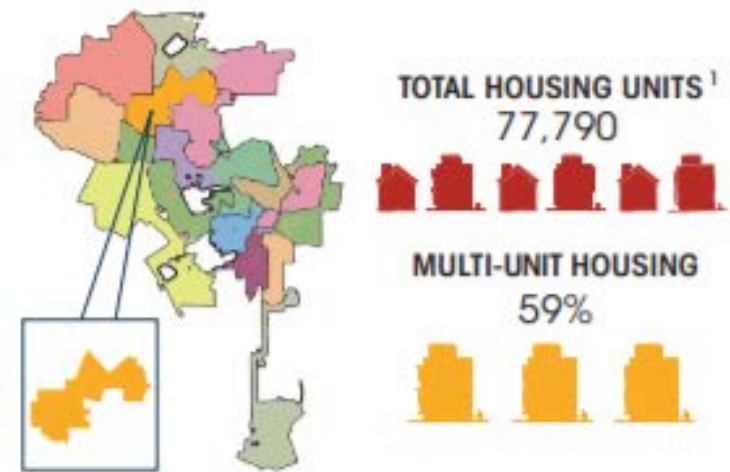
Reference:

12. UCLA Center for Health Policy Research. Health at Risk: Policies Are Needed to End Cigarette, Marijuana, and E-Cigarette Secondhand Smoke in Multi-Unit Housing in Los Angeles. 2019. <https://healthpolicy.ucla.edu/publications/Documents/PDF/2020/District5.pdf>.

SMOKEFREE MULTI-UNIT HOUSING PROFILE COUNCIL DISTRICT 6

BASED ON SURVEY RESPONSES FROM TENANTS & OWNERS

MULTI-UNIT HOUSING INCLUDES APARTMENTS, DUPLEX, TRIPLEXES WHERE UNITS ARE NEXT TO EACH OTHER SHARING A COMMON WALL



DISTRICT 6 CITIES

North Hollywood
Sun Valley
Van Nuys
Lake Balboa
Panorama City
Arleta

DISTRICT TENANTS SUPPORT SMOKEFREE HOUSING POLICIES²



Of tenants surveyed supported smokefree laws in new buildings.



Of tenants surveyed supported smokefree laws in old buildings.

DISTRICT TENANTS REPORTED EXPOSURE TO SECONDHAND SMOKE²

WITHIN MULTI-UNIT HOUSING:



3 in 5

Tenants reported exposure to secondhand smoke.



3 in 5

Tenants living with children reported exposure to secondhand smoke in their home.



2 in 3

Tenants who have or live with someone who has a chronic condition reported exposure to secondhand smoke in their home.

9 in 10

Of these respondents reported that secondhand smoke worsened the chronic health condition.

OWNERS IN THE CITY OF LA SUPPORT SMOKEFREE HOUSING POLICIES³



Of owners with self-imposed smokefree policies support policies.



Of owners without self-imposed smokefree policies support policies.

Reference:

12. UCLA Center for Health Policy Research. Health at Risk: Policies Are Needed to End Cigarette, Marijuana, and E-Cigarette Secondhand Smoke in Multi-Unit Housing in Los Angeles. 2019. <https://healthpolicy.ucla.edu/publications/Documents/PDF/2020/District6.pdf>.

SMOKEFREE MULTI-UNIT HOUSING PROFILE COUNCIL DISTRICT 11

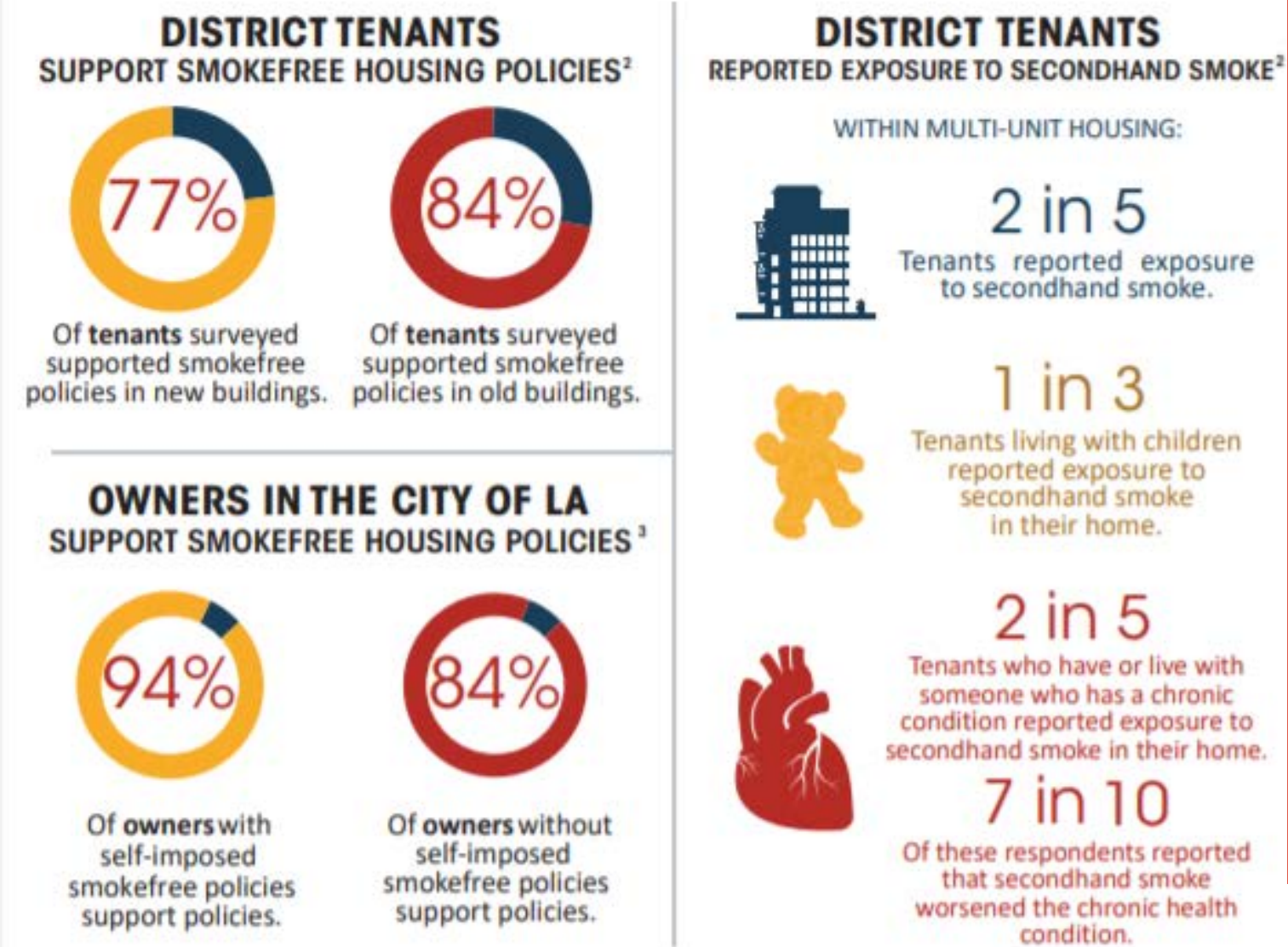
BASED ON SURVEY RESPONSES FROM TENANTS & OWNERS

MULTI-UNIT HOUSING INCLUDES APARTMENTS, DUPLEX, TRIPLEXES WHERE UNITS ARE NEXT TO EACH OTHER SHARING A COMMON WALL



DISTRICT 11 CITIES

- Brentwood
- Del Rey
- Mar Vista
- Marina del Rey
- Pacific Palisades
- Palms
- Playa del Rey
- Playa Vista
- Sawtelle
- Venice
- West Los Angeles
- Westchester



Reference:

12. UCLA Center for Health Policy Research. Health at Risk: Policies Are Needed to End Cigarette, Marijuana, and E-Cigarette Secondhand Smoke in Multi-Unit Housing in Los Angeles. 2019. <https://healthpolicy.ucla.edu/publications/Documents/PDF/2020/District11.pdf>.



State Of Tobacco Control 2021 – California Local Grades

**How well is LA county addressing
Secondhand smoke?**

Reference:

13. American Lung Association. California Communities Earn Top Grades in Annual State Tobacco Control Report, Driving the Fight for Strong Tobacco Control Policy. 2021. <https://www.lung.org/getmedia/3b258a14-f355-42d0-9cac-18901c1802eb/state-of-tobacco-control-california-local-grades.pdf>

Los Angeles County (1/4)

	Agoura Hills	Alhambra	Arcadia	Artesia	Avalon	Azusa	Baldwin Park	Bell	Bellflower	Bell Gardens	Beverly Hills	Bradbury	Burbank	Calabasas	Carson	Cerritos	Clement	Commerce	Compton	Covina	Cudahy	Culver City
Overall Tobacco Control Grade	D	F	D	D	F	F	B	D	F	C	A	F	B	A	B	C	F	F	A	F	F	B
TOTAL POINTS	3	1	2	4	1	0	10	4	0	5	13	0	9	11	9	5	1	1	13	1	0	9
Smokefree Outdoor Air	B	D	C	F	D	F	B	A	F	D	A	F	B	A	A	D	D	D	A	D	F	D
Dining	2	0	0	0	0	0	4	4	0	0	4	0	2	4	4	0	0	0	4	0	0	2
Entryways	4	0	0	0	0	0	4	4	0	2	2	0	4	4	4	0	0	0	4	0	0	0
Public Events	0	0	4	0	0	0	0	3	0	2	3	0	3	4	4	0	0	0	4	0	0	0
Recreation Areas	4	4	4	0	2	0	4	3	0	4	4	0	3	4	4	4	4	3	4	4	0	4
Service Areas	4	0	0	0	4	0	4	4	0	0	4	0	4	4	4	0	0	0	4	0	0	0
Sidewalks	1	0	0	0	0	1	0	1	0	0	1	0	1	1	0	0	0	0	1	0	0	0
Worksites	0	0	0	0	0	0	0	0	0	0	1	0	0	1	1	0	0	0	0	0	0	0
TOTAL POINTS	15	4	8	0	6	1	16	19	0	8	19	0	17	22	21	4	4	3	21	4	0	6
Smokefree Housing	F	F	F	F	F	F	B	F	F	A	A	F	C	C	D	F	F	F	A	F	F	A
Nonsmoking Apartments	0	0	0	0	0	0	2	0	0	4	4	0	0	2	0	0	0	0	4	0	0	4
Nonsmoking Condominiums	0	0	0	0	0	0	2	0	0	4	4	0	0	0	0	0	0	0	4	0	0	4
Nonsmoking Common Areas	0	0	0	0	0	0	4	0	0	4	4	0	4	4	2	0	0	0	4	0	0	4
TOTAL POINTS	0	0	0	0	0	0	8	0	0	12	12	0	4	6	2	0	0	0	12	0	0	12
Reducing Sales of Tobacco Products	F	F	F	A	F	F	A	F	F	F	A	F	A	A	A	A	F	F	A	F	F	A
Tobacco Retailer Licensing	0	0	0	4	0	0	4	0	0	0	4	0	4	4	4	4	0	0	4	0	0	4
TOTAL POINTS	0	0	0	4	0	0	4	0	0	0	4	0	4	4	4	4	0	0	4	0	0	4
Emerging Issues Bonus Points																						
Emerging Products Definition - <i>Secondhand Smoke</i>	1	1	1	1	1	1	1	1	0	1	1	0	0	1	1	1	0	0	1	0	0	0
Emerging Products Definition - <i>Licensing</i>	0	0	0	1	0	0	1	0	0	0	1	0	1	1	1	1	0	0	1	0	0	1
Retailer Location Restrictions	0	0	0	0	0	0	0	0	0	0	0	0	0	1	0	0	0	0	0	1	0	0
Sale of Tobacco Products in Pharmacies	0	0	0	0	0	0	0	0	0	0	1	0	0	0	0	0	0	0	0	0	0	0
Flavored Tobacco Products	0	0	0	0	0	0	0	0	0	0	1	0	1	0	0	0	0	0	1	0	0	1
Minimum Pack Size of Cigars	0	0	0	0	0	0	0	0	0	0	0	0	0	0	0	0	0	0	0	0	0	0
TOTAL POINTS	1	1	1	2	1	1	2	1	0	1	4	0	2	3	2	2	0	0	3	1	0	2

Los Angeles County (2/4)

	Diamond Bar	Downey	Duarte	El Monte	El Segundo	Gardena	Glendale	Glendora	Hawaiian Gardens	Hawthorne	Hermosa Beach	Hidden Hills	Huntington Park	Industry	Inglewood	Irwindale	La Canada Flintridge	La Habra Heights	La Mirada	La Puente	La Verne	Lakewood
Overall Tobacco Control Grade	F	F	C	B	D	C	B	F	C	C	B	F	A	F	C	F	C	F	F	F	C	F
TOTAL POINTS	0	1	5	10	4	6	10	1	5	6	10	0	13	0	6	0	6	0	1	0	6	0
Smokefree Outdoor Air	F	D	D	D	F	D	A	D	D	C	A	F	A	F	C	F	C	F	D	F	D	F
Dining	0	0	0	0	0	2	2	0	0	0	4	0	4	0	0	0	4	0	0	0	0	0
Entryways	0	0	0	0	0	0	4	0	0	0	2	0	4	0	0	0	0	0	0	0	0	0
Public Events	0	3	0	0	0	0	4	0	0	4	4	0	4	0	4	0	3	0	2	0	0	0
Recreation Areas	2	4	4	4	2	4	4	4	4	4	4	0	4	0	4	2	4	0	4	2	4	0
Service Areas	0	0	2	0	0	0	4	0	0	0	2	0	4	0	0	0	0	0	0	0	0	0
Sidewalks	0	0	0	0	0	0	1	0	0	0	1	0	1	0	0	0	0	0	0	0	0	0
Worksites	0	0	0	0	0	0	1	0	0	0	1	0	1	0	0	0	0	0	0	0	0	0
TOTAL POINTS	2	7	6	4	2	6	20	4	4	8	18	0	22	0	8	2	11	0	6	2	4	0
Smokefree Housing	F	F	F	A	F	F	C	F	F	F	F	n/a	A	F	F	F	F	F	F	F	F	F
Nonsmoking Apartments	0	0	0	4	0	0	1	0	0	0	0		4	0	0	0	0	0	0	0	0	0
Nonsmoking Condominiums	0	0	0	4	0	0	1	0	0	0	0		2	0	0	0	0	0	0	0	0	0
Nonsmoking Common Areas	0	0	0	4	0	0	4	0	0	0	0		4	0	0	0	0	0	0	0	0	0
TOTAL POINTS	0	0	0	12	0	0	6	0	0	0	0		10	0	0	0	0	0	0	0	0	0
Reducing Sales of Tobacco Products	F	F	A	A	A	A	A	F	A	A	A	F	A	F	A	F	A	F	F	F	A	F
Tobacco Retailer Licensing	0	0	4	4	4	4	4	0	4	4	4	0	4	0	4	0	4	0	0	0	4	0
TOTAL POINTS	0	0	4	4	4	4	4	0	4	4	4	0	4	0	4	0	4	0	0	0	4	0
Emerging Issues Bonus Points																						
Emerging Products Definition - <i>Secondhand Smoke</i>	0	1	0	1	0	1	1	1	1	0	1	0	1	0	0	0	1	0	1	0	1	1
Emerging Products Definition - <i>Licensing</i>	0	1	1	1	0	1	1	0	1	0	1	0	1	0	1	0	0	0	0	0	1	0
Retailer Location Restrictions	0	0	0	0	0	0	0	0	0	0	1	0	1	0	0	0	0	0	1	0	1	0
Sale of Tobacco Products in Pharmacies	0	0	0	0	0	0	0	0	0	0	1	0	0	0	0	0	0	0	0	0	0	0
Flavored Tobacco Products	0	0	0	1	0	0	0	0	0	0	1	0	0	0	0	0	0	0	0	0	0	0
Minimum Pack Size of Cigars	0	0	0	1	0	1	0	0	0	0	1	0	1	0	0	0	0	0	0	0	0	0
TOTAL POINTS	0	2	1	4	0	3	2	1	2	0	6	0	4	0	1	0	1	0	2	0	3	1

Los Angeles County (3/4)

	Lancaster	Lawndale	Lomita	Long Beach	Los Angeles	Lynwood	Malibu	Manhattan Beach	Maywood	Monrovia	Montebello	Monterey Park	Norwalk	Palmdale	Palos Verdes Estates	Paramount	Pasadena	Pico Rivera	Pomona	Rancho Palms Verdes	Redondo Beach	Rolling Hills	Rolling Hills Estates
Overall Tobacco Control Grade	D	C	C	C	C	C	C	A	D	F	D	C	F	C	D	F	A	F	F	F	B	F	F
TOTAL POINTS	4	5	5	7	7	4	6	13	4	1	4	6	1	7	3	0	12	0	0	1	9	0	0
Smokefree Outdoor Air	F	D	D	C	B	F	C	A	F	D	F	C	D	D	B	F	A	F	F	D	A	F	F
Dining	0	0	0	2	2	0	4	4	0	0	2	4	0	0	4	0	4	0	0	0	4	0	0
Entryways	0	0	0	0	4	0	4	4	0	0	0	4	0	0	4	0	4	0	0	0	4	0	0
Public Events	0	0	0	2	2	0	2	4	0	0	0	0	0	2	4	0	4	0	0	0	2	0	0
Recreation Areas	0	4	4	4	3	2	2	4	2	4	0	4	3	3	2	0	4	2	2	3	4	0	2
Service Areas	2	0	0	2	0	0	0	4	0	0	0	0	0	0	0	0	4	0	0	0	4	0	0
Sidewalks	0	0	0	0	0	0	0	1	0	0	0	0	0	0	1	0	1	0	0	0	1	0	0
Worksites	0	0	0	0	0	0	0	0	0	0	0	0	0	0	0	0	0	0	0	0	1	0	0
TOTAL POINTS	2	4	4	10	11	2	12	21	2	4	2	12	3	5	15	0	21	2	2	3	20	0	2
Smokefree Housing	F	F	F	D	F	F	F	A	F	F	F	F	F	D	F	F	A	F	F	F	F	F	F
Nonsmoking Apartments	0	0	0	0	0	0	0	4	0	0	0	0	0	0	0	0	4	0	0	0	0	0	0
Nonsmoking Condominiums	0	0	0	0	0	0	0	4	0	0	0	0	0	0	0	0	4	0	0	0	0	0	0
Nonsmoking Common Areas	0	0	0	2	0	0	0	4	0	0	0	0	0	2	0	0	4	0	0	0	0	0	0
TOTAL POINTS	0	0	0	2	0	0	0	12	0	0	0	0	0	2	0	0	12	0	0	0	0	0	0
Reducing Sales of Tobacco Products	A	A	A	A	A	A	A	A	A	F	A	A	F	A	F	F	A	F	F	F	A	n/a	F
Tobacco Retailer Licensing	4	4	4	4	4	4	4	4	4	0	4	4	0	4	0	0	4	0	0	0	4		0
TOTAL POINTS	4	4	4	4	4	4	4	4	4	0	4	4	0	4	0	0	4	0	0	0	4		0
Emerging Issues Bonus Points																							
Emerging Products Definition - <i>Secondhand Smoke</i>	0	0	0	1	1	1	0	1	0	1	0	1	1	1	0	0	0	1	1	0	1		1
Emerging Products Definition - <i>Licensing</i>	1	0	1	0	1	1	1	1	0	0	1	0	0	1	0	0	0	0	0	0	1		0
Retailer Location Restrictions	0	0	0	0	0	1	0	1	0	0	0	0	0	1	0	0	1	0	0	0	0		0
Sale of Tobacco Products in Pharmacies	0	0	0	0	0	0	0	1	0	0	0	0	0	0	0	0	0	0	0	0	0		0
Flavored Tobacco Products	0	0	0	0	0	0	0	1	1	0	0	0	0	0	0	0	0	0	0	0	1		0
Minimum Pack Size of Cigars	0	0	0	0	0	0	0	0	0	0	0	0	0	0	0	0	0	0	0	0	0		0
TOTAL POINTS	1	0	1	1	2	3	1	5	1	1	1	1	1	3	0	0	1	1	1	0	3		1

Los Angeles County (4/4)

	Rosemead	San Dimas	San Fernando	San Gabriel	San Marino	Santa Clarita	Santa Fe Springs	Santa Monica	Sierra Madre	Signal Hill	South El Monte	South Gate	South Pasadena	Temple City	Torrance	Vernon	Walnut	West Covina	West Hollywood	Westlake Village	Whittier	Los Angeles County Unincorporated
Overall Tobacco Control Grade	C	F	B	C	F	F	F	A	C	F	C	F	A	B	F	F	F	D	C	F	F	C
TOTAL POINTS	5	1	8	5	0	1	1	11	5	0	6	1	11	9	1	0	1	3	5	0	1	7
Smokefree Outdoor Air	D	D	A	D	F	D	D	A	D	F	C	D	B	A	D	F	D	F	D	F	D	C
Dining	0	0	4	0	0	0	0	4	4	0	4	0	4	4	0	0	0	0	2	0	0	4
Entryways	0	0	4	0	0	0	0	4	0	0	0	0	4	4	0	0	0	0	0	0	0	0
Public Events	0	0	4	0	0	0	0	2	0	0	0	0	0	4	0	0	0	0	0	0	0	0
Recreation Areas	4	4	4	4	0	4	3	4	2	0	4	3	4	4	4	0	4	2	0	0	4	4
Service Areas	0	0	4	0	0	0	0	4	0	0	0	0	4	4	0	0	0	0	4	0	0	2
Sidewalks	0	0	0	0	0	0	0	0	0	0	0	0	1	0	0	0	0	0	0	0	0	0
Worksites	0	0	0	0	0	0	0	0	0	0	0	0	0	0	0	0	0	0	0	0	0	0
TOTAL POINTS	4	4	20	4	0	4	3	18	6	0	8	3	17	20	4	0	4	2	6	0	4	10
Smokefree Housing	F	F	F	F	F	F	F	B	F	F	F	F	B	D	F	F	F	F	F	F	F	F
Nonsmoking Apartments	0	0	0	0	0	0	0	2	0	0	0	0	2	0	0	0	0	0	0	0	0	0
Nonsmoking Condominiums	0	0	0	0	0	0	0	2	0	0	0	0	2	0	0	0	0	0	0	0	0	0
Nonsmoking Common Areas	0	0	0	0	0	0	0	4	0	0	0	0	4	2	0	0	0	0	0	0	0	0
TOTAL POINTS	0	0	0	0	0	0	0	8	0	0	0	0	8	2	0	0	0	0	0	0	0	0
Reducing Sales of Tobacco Products	A	F	A	A	F	F	F	A	A	F	A	F	A	A	F	F	F	B	B	F	F	A
Tobacco Retailer Licensing	4	0	4	4	0	0	0	4	4	0	4	0	4	4	0	0	0	3	3	0	0	4
TOTAL POINTS	4	0	4	4	0	0	0	4	4	0	4	0	4	4	0	0	0	3	3	0	0	4
Emerging Issues Bonus Points																						
Emerging Products Definition - <i>Secondhand Smoke</i>	0	1	1	0	0	1	0	1	0	0	1	0	1	1	1	0	0	1	0	0	0	1
Emerging Products Definition - <i>Licensing</i>	0	0	0	0	0	0	0	1	0	0	1	0	1	0	0	0	0	0	1	0	0	1
Retailer Location Restrictions	0	0	0	0	0	0	0	0	0	0	0	0	1	1	0	0	0	0	1	0	0	0
Sale of Tobacco Products in Pharmacies	0	0	0	0	0	0	0	0	0	0	0	0	0	0	0	0	0	0	0	0	0	1
Flavored Tobacco Products	0	0	0	0	0	0	0	0	0	0	0	0	0	0	0	0	0	0	0	0	0	1
Minimum Pack Size of Cigars	0	0	0	0	0	0	0	0	0	0	0	0	0	0	0	0	0	0	1	0	0	1
TOTAL POINTS	0	1	1	0	0	1	0	2	0	0	2	0	3	2	1	0	0	1	3	0	0	5

Breakdown of Smokefree Housing Ordinances in California

	POLICY PROVISIONS					
	Date Passed/ Population	Percentage & Minimum # of Units	Implementation	Grandfathering	Includes Condominiums	Includes Electronic Cigarettes
Santa Clara	February 2019 129,604	100% 2 units	6 months			X
Half Moon Bay	October 2018 12,639	100% 2 units	Existing: 14 months New: Immediately		X	X
Emeryville	September 2018 (Orig. Dec 2006) 11,994	100% 2 units	3 months		X	X
Tiburon	July 2018 (Orig. July 2011) 9,648	100% 2 units	Existing: 35 months New: Immediately			X
Clayton	July 2018 11,431	100% 2 units	10 months		X	X
Ross	May 2018 2,533	100% 2 units	Immediately		X	X
Contra Costa County	March 2018 (Orig. Oct 2010) 1,149,363	100% 2 units	16 months		X	X
Rohnert Park	January 2018 (Orig. April 2009) 43,598	100% 2 units	Existing: 60 days New: 30 days		X	X

Reference:
14. The Center for Tobacco Policy and Organizing.. American Lung Association. Matrix of Strong Local Smokefree Multi-Unit Housing Ordinances.

Why is smoke-free multi-unit housing important



YOUR
FAMILY'S
HEALTH

YOUR
NEIGHBOR'S
HEALTH

YOUR
HEALTH!

YOUR
COMMUNITY'S
HEALTH

YOUR PET'S
HEALTH

Smoke-Free Multi-Unit Housing Benefits



**POSITIVE
MODELING**¹⁵



**PROTECTION
FROM SHS**¹⁵



**REDUCED
COSTS**¹⁵



**MARKET
ADVANTAGE**¹⁵



**REDUCED FIRE
RISKS**¹⁵

Reference:

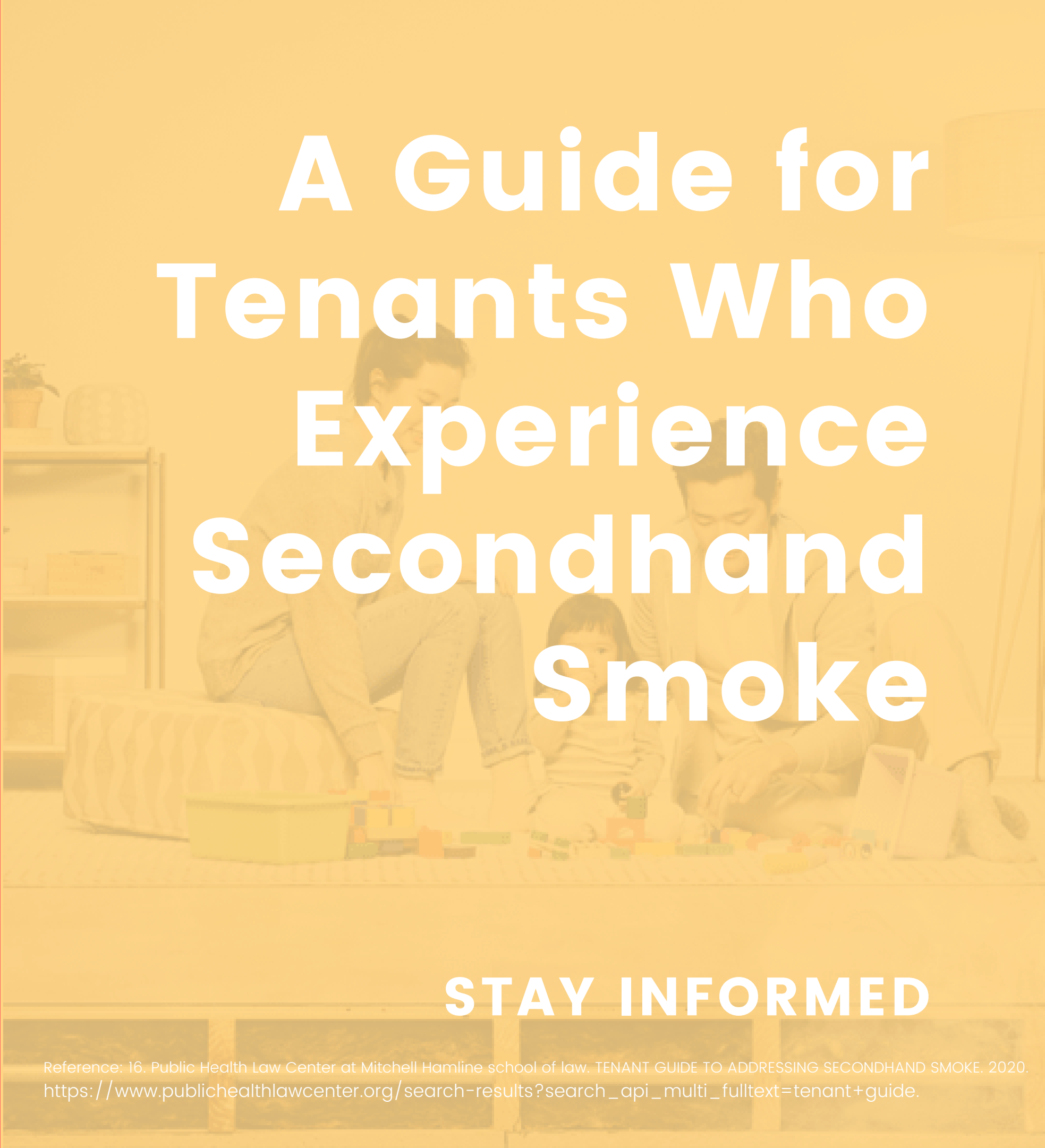
15.Public Health Law Center at Mitchell Hamline School of Law. Regulating Smoking in Multi-Unit Housing. 2021.
<https://www.publichealthlawcenter.org/sites/default/files/resources/Regulating-Smoking-in-MUH.pdf>

OPTION #1: APPROACH/ TALK WITH YOUR NEIGHBOR IF YOU FEEL COMFORTABLE DOING SO.¹⁶

OPTION #2: NOTIFY THE PROPERTY OWNER OF THE ISSUE IN WRITING AND ASK TO TAKE STEPS TO ELIMINATE THE EXPOSURE.¹⁶

OPTION #3: REVIEW THE LEASE TO SEE IF THEY SPEAK OF NUISANCES OR SMOKE-FREE POLICIES.¹⁶

OPTION #4: APPROACH HOME OWNERS ASSOCIATION (HOA)



A Guide for Tenants Who Experience Secondhand Smoke

STAY INFORMED

Follow Us

Instagram
[@smokefreelungs_la](#)

Facebook
[@Community Health Alliance](#)

Visit Our Website:
smokefreelungs.org



Contact Us

Email:

smokefreelungs@publicstrategies.org

Phone: (310)215-9924 ext.134

MAURINA CINTRON

Program Manager

ANDREA RAYAS

Community Engagement Coordinator